



IDEAL NETWORKS

SignalTEK NT

Upgrade Information



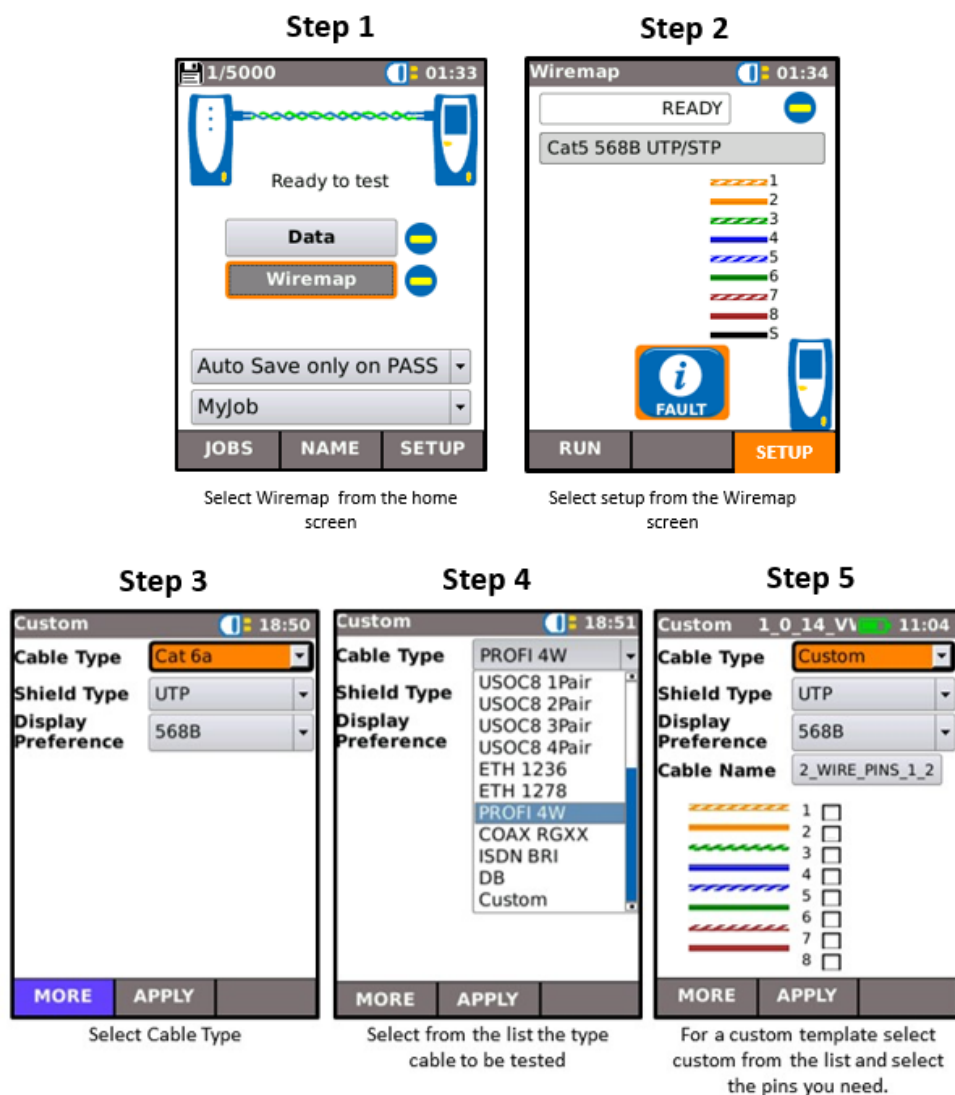
SignalTEK NT Software Release Notes

Summary:

Release v1.0.19 (display unit) and v1.0.5 (remote unit) replaces the previous production release v1.0.8 (display unit) and v1.0.5 (remote unit) of SignalTEK NT respectively.

Main changes:

- New functionality
 - New user defined custom wiremap option including new predefined templates for Cat 6A/7A/8, ISDN, ProfiNet 4 wire and German Rail.



- Automatic detection of DHCP IP information in the setup screen.
- The IEEE 802.3ab test standard has been included on the test report.
- Enhancements:

- Improved wiremap distance to fault accuracy when multiple faults are detected.
- CDP/LLDP decoding is now compatible with even more vendor switches.
- Improved formatting of port discovery information on the tester screen and the report.
- Bug fixes:
 - General improvements to the test report.
 - General improvements to the language translations.
 - Tx and Rx frame count display was cropped on the test screen and report.
 - Fixed PoE voltage shown on printed report.

SignalTEK NT Software Update Procedure

WARNING

All stored data will be removed from tester. Please back up all your stored data to USB memory key before upgrading. The upgrade is not reversible back to previous version.

To update the Near End Display Unit to the current latest software version:

1. Copy the file SignalTEK-NT-md5.bin to the root directory of a USB memory key
2. Ensure that the tester is connected to the mains power supply, or that the battery is fully charged
3. Switch the tester ON
4. Insert the USB memory key into the tester
5. Save any results stored in the tester (all data and settings will be lost following the software update)
6. From the HOME screen, select F3(SETUP) / SYSTEM / UPDATE
7. Select F1 (UPDATE)
8. Wait for the update to be completed

To update the Remote Unit to the current software version:

1. Copy the file SigTEK2.bin to the root directory of a USB memory key
2. Ensure that the tester is connected to the mains power supply, or that the battery is fully charged
3. With the tester switched OFF, insert the USB memory key into the tester
4. Press and hold the AutoTest button
5. Switch the tester ON. The LEDs will flash in sequence
6. Wait for the update to be completed, when the LEDs stop flashing.

Note for SignalTEK II FO users:

1. For users who have the SignalTEK II FO would like to keep upgrade their unit to the latest software with bug fixings, you must convert your unit to SignalTEK NT v1.0.1 first then following the above software upgrade procedure of SignalTEK NT to the latest software in your SignalTEK II FO tester. Bear in mind your tester is becoming SignalTEK NT **NOT** SignalTEK II FO any more after this conversion.
2. Once upgraded to this software version the tester can not be downgraded to an earlier version. All data and configuration information will be erased when upgrading to this version. Please make sure you back up all your data to USB memory key before conversion.
3. To check whether your unit has been converted into SignalTEK NT or not you can power off the unit and power on again to see the first screen showing SignalTEK NT or SignalTEK II FO.
4. It is strongly suggested to upgrade your remote unit to the latest software at the same time during conversion of your SignalTEK II FO.
5. For the detailed procedure of converting your SignalTEK II FO to SignalTEK NT, please go to the software page on www.idealnetworks.net.



IDEAL NETWORKS

IDEAL INDUSTRIES LIMITED
Stokenchurch House, Oxford Road, Stokenchurch,
High Wycombe, Bucks, HP14 3SX, UK.

www.idealnetworks.net

A subsidiary of IDEAL INDUSTRIES INC.



IDEAL INDUSTRIES, INC.